

FactoryTalk[®] System Design Fundamentals

系统设计基础

PUBLIC



Allen-Bradley • Rockwell Software

**Rockwell
Automation**

Agenda 议程

Rockwell
Automation

■ 初建立系统时，需要考虑的几个方面：

FactoryTalk® Services Platform

Data Servers 数据服务器

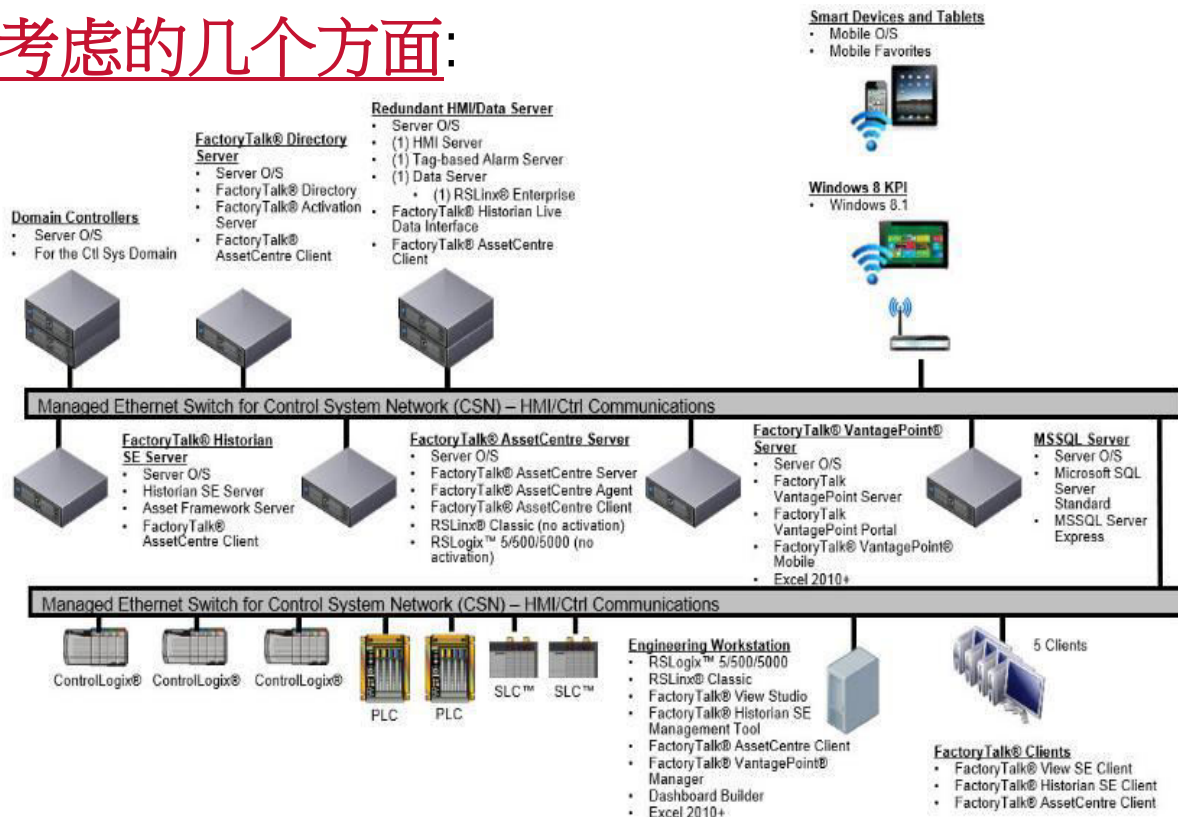
FactoryTalk® View Site Edition (SE)

FactoryTalk® Historian

FactoryTalk® AssetCentre

FactoryTalk® VantagePoint

Microsoft SQL Server



Prerequisite Knowledge 前提知识

Rockwell
Automation

■ Controller 程序设计(CL14)

- 数组 vs 零散标签 tags
- Continuous vs Periodic 任务
- Connections and memory 消耗



■ 网络基础知识(NS02)

- 管理型交换机
- 防火墙设置
- 网络容错设置



Windows 结构体系

- 建议应用服务器使用Windows服务器操作系统

- Windows 系统兼容:
Product Compatibility & Download Center

- 软件补丁兼容:
Rockwell Software® MS Patch Qualifications

FactoryTalk AssetCentre (9515-ASTx) Provides you with a set of asset focused tools to securely/centrally manage your factory and process au			
Version Downloads Information	6.00.00	5.00.00	4.10.00
▶ Windows 7 Enterprise SP1 32-bit	⚠	ⓘ	ⓘ
EXPAND ALL Other Features			
Rockwell Services			
System Features			
Operating Systems			
General			
Windows 2003			
Windows 2003 R2			
Windows 2003 R2 Standard SP2 (32-bit)	⚠	✅	✅
Windows 2003 R2 Standard (32-bit)	⚠	⚠	⚠
Windows 2008			
Windows 2008 R2			
Windows Server 2008 R2 Standard SP1	✅	✅	✅
Windows Server 2008 R2 Standard	❌	✅	✅
Windows Server 2008 R2 Enterprise SP1	✅	⚠	⚠

- <http://www.rockwellautomation.com/rockwellsoftware/support/overview.page?>

Windows 结构体系

Workgroups 工作组 vs Domains 域

- 工作组支持小于**10个 FactoryTalk®**计算机的架构，超过10个推荐Windows域
- 常见的要求
 - 独特的IP地址--集中的环境可以允许保留DHCP服务器
 - 独特的主机名--集中的环境可以允许DNS
- 域与工作组的差异
 - 用户名认证--工作组需要特别配置
 - 安全--域允许活动目录用户连接

Workgroup 环境:
所有电脑在同一个Workgroup里.

Domain 环境:
所有电脑必须在同一个域中.

Domain 或者 Workgroup 不可以
混合搭配.

域控制器

Domain Controllers

- Server O/S



Managed Ethernet Switch for Control System Network (CSN) – HMI/Ctrl Communications

Managed Ethernet Switch for Control System Network (CSN) – HMI/Ctrl Communications



ControlLogix®



ControlLogix®



ControlLogix®



PLC



PLC



SLC™



SLC™

Engineering Workstation

- RSLogix™ 5/500/5000
- RSLinx® Classic



FactoryTalk[®] Services Platform

PUBLIC



Allen-Bradley • Rockwell Software

**Rockwell
Automation**

FactoryTalk® Services Platform 概述

Rockwell
Automation

“Build a suite of common services that can be shared by many applications”

建立一个可以共享的许多应用程序的公共服务-----SOA



- FactoryTalk® Services Platform CPR9 兼容所有的 Service Releases (SRs.)
 - 例如: CPR9 SR6 可以兼容 CPR9 SR5.
 - 建议在所有主机上保持相同的FactoryTalk®服务平台版本和补丁级别。
 - 请参考软件产品兼容查询网站:
<http://compatibility.rockwellautomation.com/Pages/ProductReplacement.aspx?crumb=101>
 - Coordinated Product Release (CPR) Service Release (SR)
- 建议升级FactoryTalk®目录服务器到最高的FactoryTalk®服务平台版本
 - 有些产品可能需要FactoryTalk目录升级。

FactoryTalk® Services Platform

本地FTD vs 网络FTD

**Rockwell
Automation**

■ Local FactoryTalk® Directory:

- 本地应用：Encompasses applications and FactoryTalk® products.
- 独立应用：local components can be used in local FactoryTalk® Directory applications.

Local FactoryTalk® Directory

- HMI Server
- Data Server
- Client



Local FactoryTalk® Directory

- HMI Server
- Data Server
- Client



Local FactoryTalk® Directory

- HMI Server
- Data Server
- Client



FactoryTalk® Services Platform

本地FTD vs 网络FTD

**Rockwell
Automation**

■ Network FactoryTalk® Directory:

- 连接各主机：Ties multiple FactoryTalk® PCs together, all utilizing a central FactoryTalk® Directory.
- 共享服务：FactoryTalk® Products in a Network FactoryTalk® Directory can share services, such as FactoryTalk® Security, FactoryTalk® Diagnostics, and FactoryTalk® Live Data.
- 分布式应用：Can be utilized for distributed applications, or applications with everything installed on one PC.



FactoryTalk® Services Platform

关于Network FTD主机的建议

**Rockwell
Automation**

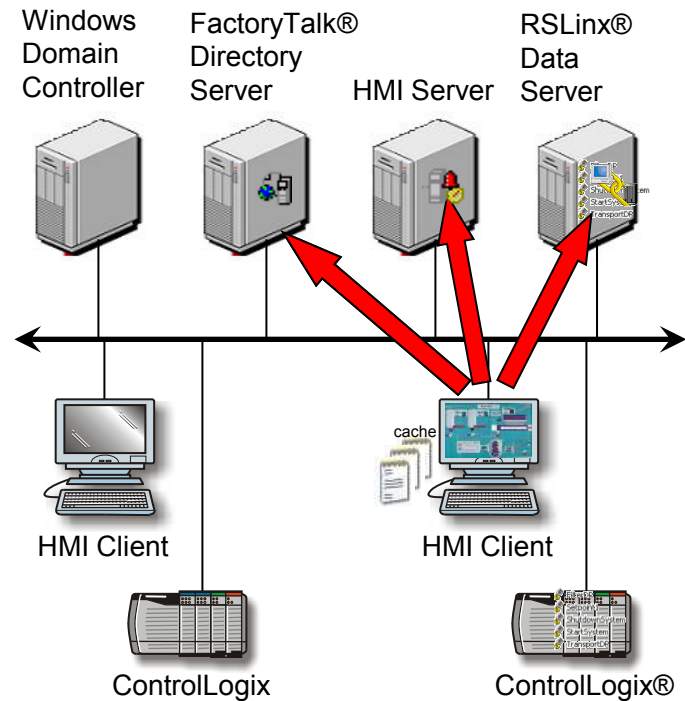
- 为何建议FTD单独一台主机？ **The role of the Network server should be hosted on a dedicated computer.**
 - FTD需要优先启动– FactoryTalk® Directory should be first to start
 - 方便控制版本 – Occasionally required versioning
 - 更易升级和补丁 – Independent patching easy
 - 降低风险– Lowest risk option keeps FTD available for failover/failback
- FTD的主机上建议安装？ **Additionally, a dedicated Network FactoryTalk® Directory is an ideal location for the following roles that are often present in a FactoryTalk® system:**
 - FactoryTalk® Activation Server
 - FactoryTalk® Alarms and Events Historical Log (SQL Standard/Express)
 - Centralized FactoryTalk® Diagnostics Server (including SQL Server) in absence of AssetCentre
 - FactoryTalk® Historian Components, including redundancy shared file
- 建议使用server系统~ **A server operating system (2008, 2012 Server) should be used.**
 - 服务器系统优越性——A server OS is optimized to service network requests, which is a common function of a Network FactoryTalk® Directory.
 - 建议FTD与域服务器分开——This server should not be a Windows domain controller.

FactoryTalk® Services Platform

“去中心化”的Network FTD

Rockwell
Automation

- **FTD配置独立缓存于各台主机** Client-side caching allows for operation independent of FactoryTalk® Directory in the event of downtime.
- **宕机时，启用缓存机制** Security and directory cached, only used for access if FactoryTalk® Directory unavailable
 - Other objects can be cached, such as HMI displays
- **FTD缓存机制相关测试详见ID66352**
Detailed testing results on FactoryTalk® View SE system in absence of FactoryTalk® Directory:
 - AID 66352 - FactoryTalk® View SE Behavior when FactoryTalk® Directory is Unavailable



- **域服务器** FactoryTalk® Services Platform not required/recommended on a Domain Controller.
 - Do not co-locate a FactoryTalk® Directory server or any other FactoryTalk® software on a Domain Controller.
- **服务器系统** A FactoryTalk® Directory server should be installed on a Windows Server operating system (as opposed to a Workstation/Desktop OS.)
- **多FTD服务器** FactoryTalk® Directory servers do not communicate with each other.

FactoryTalk® Directory – FTD

Domain Controllers

- Server O/S
- For the Ctrl Sys Domain



FactoryTalk® Directory

Server

- Server O/S
- FactoryTalk® Directory
- FactoryTalk® Activation Server

Managed Ethernet Switch for Control System Network (CSN) – HMI/Ctrl Communications

Managed Ethernet Switch for Control System Network (CSN) – HMI/Ctrl Communications



ControlLogix®



ControlLogix®



ControlLogix®



PLC



PLC



SLC™



SLC™

Engineering Workstation

- RSLogix™ 5/500/5000
- RSLinx® Classic



关于FactoryTalk® Services Platform更多的问题 请参考...

**Rockwell
Automation**

- 课程- Rockwell Automation TechED™ 2016
 - NS17 - Introduction to the Design & Implementation of FactoryTalk® Security in a DCS
 - NS18 - Advanced Design, Management & Implementation of FactoryTalk® Security in a DCS

- 网络- 罗克韦尔知识库 RA Knowledgebase
 - [AID 58803 – Network FactoryTalk® Directory Best Practices](#)
 - [AID 116811 - CPR9 FactoryTalk® Services Platform Compatibility Guidelines](#)
 - [AID 66352 - FactoryTalk® View SE Behavior when FactoryTalk® Directory is Unavailable](#)

Data Server 数据服务器

PUBLIC



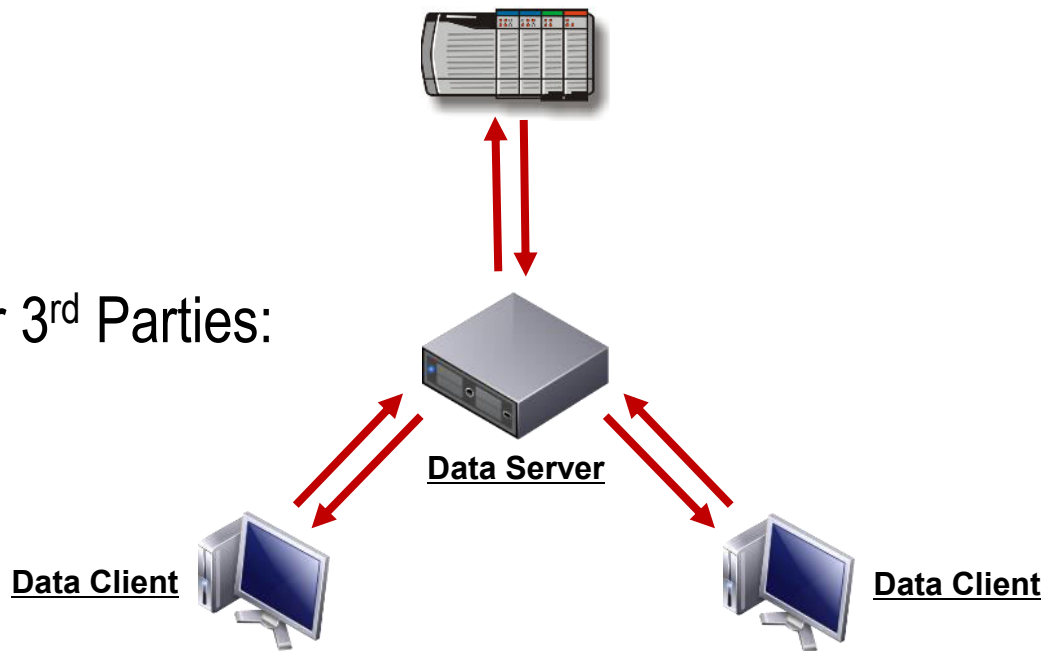
Allen-Bradley • Rockwell Software

**Rockwell
Automation**

Data Servers 的选择...

**Rockwell
Automation**

- 对于Rockwell Automation® 硬件
 - RSLinx® Classic
 - RSLinx® Enterprise
 - FactoryTalk® Gateway
- 对于第三方设备 OPC for 3rd Parties:
 - Kepware
 - Matrikon
 - 其他..



■ RSLinx® Enterprise （推荐）

- Wherever possible!
- **Preferred Data Server for Rockwell Automation® Hardware**
- Performance is greatly increased, particularly with Logix family controllers
- Also supports legacy controllers (PLC5, SLC™, etc)

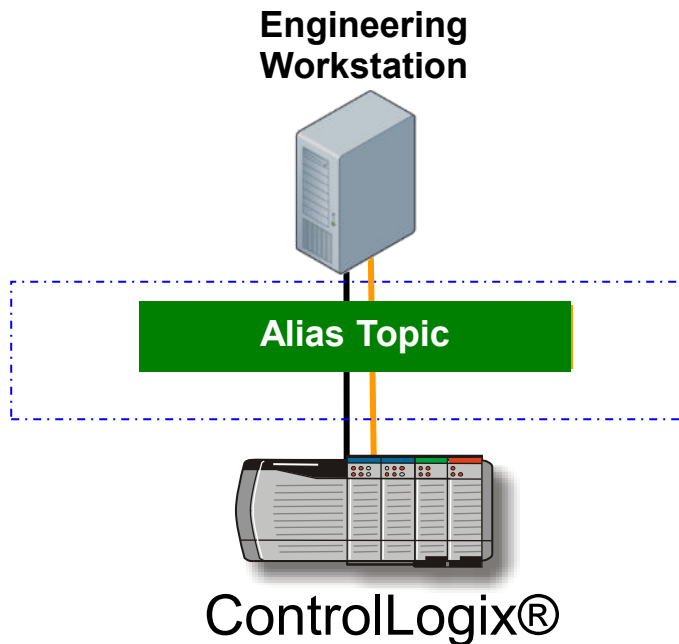
■ RSLinx® Classic

- Only when features are not available in RSLinx® Enterprise
 - 支持Alias Topic
 - 复杂网络 Complex Paths
 - Ethernet to DH, DH+, DH-485
 - 支持DDE
 - 特别驱动

Data Servers

特例1 : Alias Topics

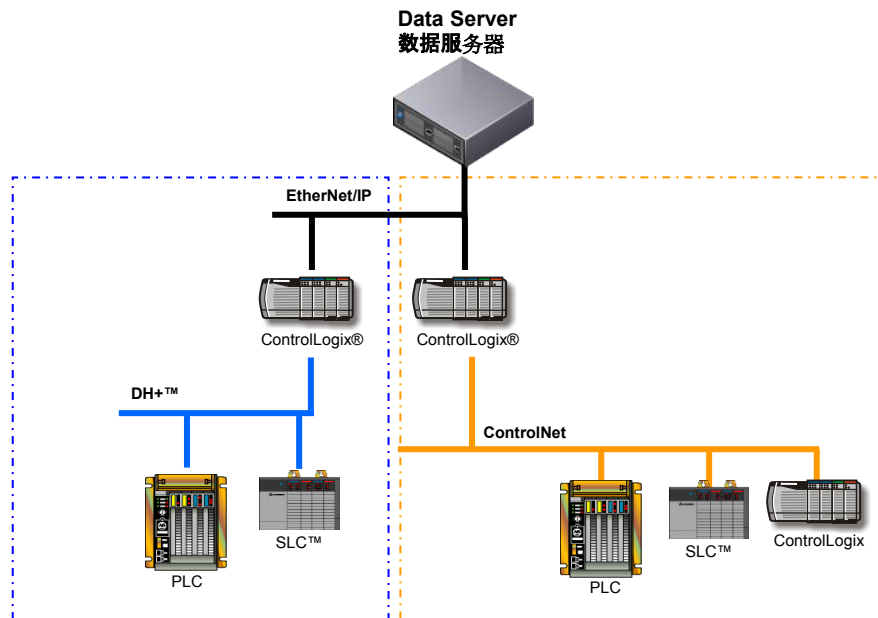
替代方案 : Redundant Ethernet? *Team the NICs and use ControlLogix® redundancy!*



- Workstation communicating to ControlLogix® via Ethernet and ControlNet
- RSLinx® Classic
 - Two total topics, one for each path (EtherNet/IP & ControlNet)
 - Alias topic references both existing topics
- RSLinx® Enterprise
 - Two total shortcuts, one for each path (EtherNet/IP & ControlNet)

Data Servers

特例2 : Complex Paths



- RSLinx® Classic 支持
 - DH+™ protocol = PCCC
 - Ethernet protocol = CIP

- RSLinx® Enterprise 支持
 - ControlNet protocol = CIP
 - Ethernet protocol = CIP

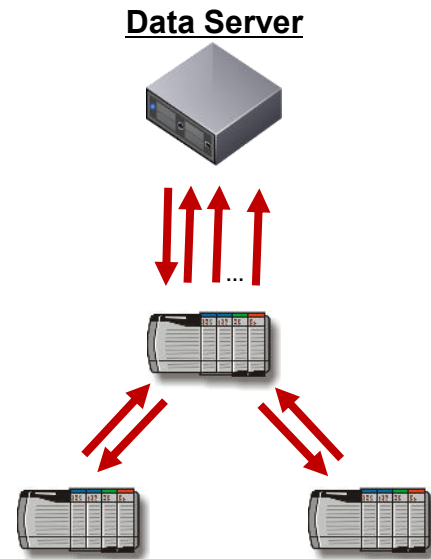
Data Servers

OPC如何选？

- RSLinx® Enterprise 是Live Data 数据服务器
 - RSLinx® Classic 不是唯一的OPC选择
- FactoryTalk® Gateway 是什么？变 Live Data 为 OPC
 - Converts at an application level, including HMI information
 - Not the same as RSLinx® Classic Gateway
- FactoryTalk® Gateway 的部署参考近client原则



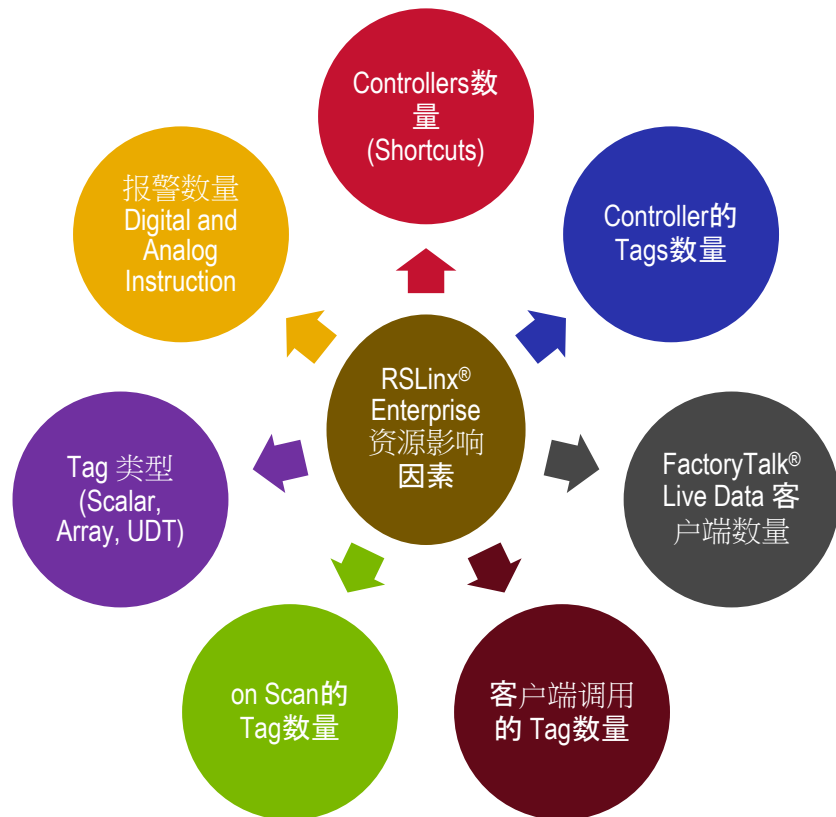
- RSLinx® Enterprise 建议 **6 connections** in a Logix Controller.
- RSLinx® Classic 建议 **5 connections** to a Logix Controller.
 - Though typically not recommended, can be increased.
- 单个CLX建议不超过**3个数据服务器** Recommend no more than **3 data server connections** to a single ControlLogix® controller.



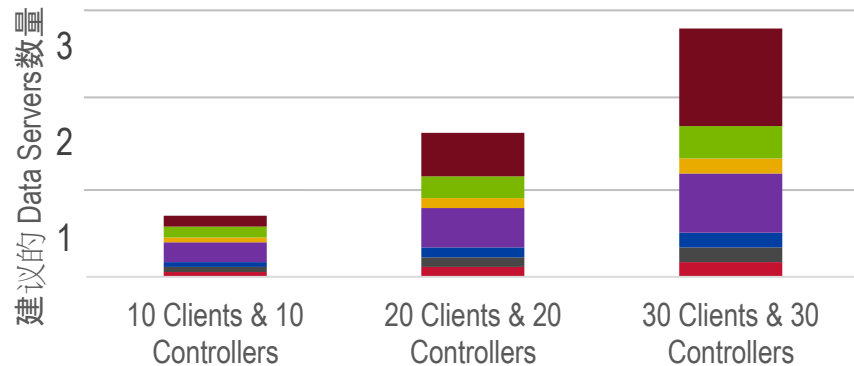
Data Servers

RSLinx® Enterprise 部署参考

Rockwell
Automation



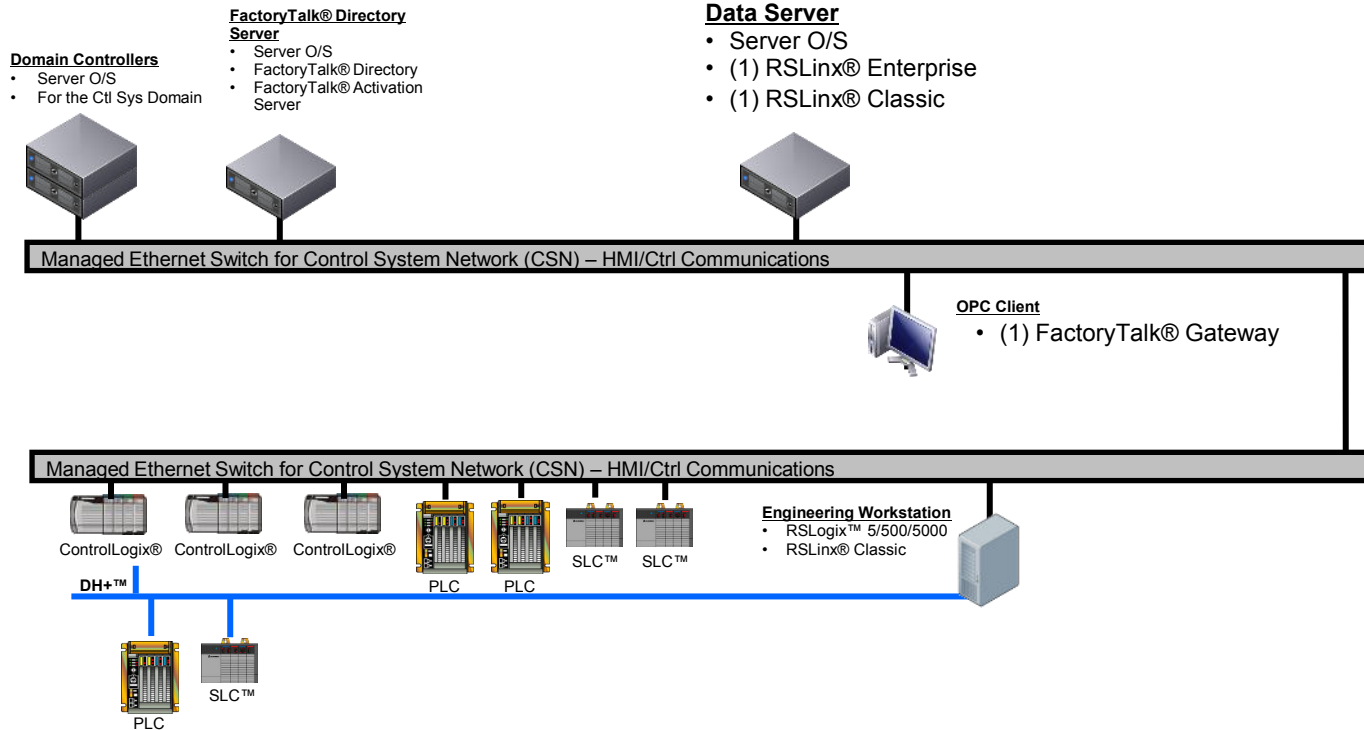
部署参考



参考情况: 每个 Controller 有 10K Numeric Tags 和 1K Strings Tags ; 每个客户端数据按 2K Numeric tags, 200 Strings, 500 Digital and 500 Analog Alarms 考虑。

合理部署分配 RSLinx® Enterprise
数据服务器。

Data Servers



关于Data Servers的更多问题...

- 课程 Rockwell Automation TechED™ 2016
 - CL14 – Optimize ControlLogix® Performance for FactoryTalk® Client Applications
 - SY25 – Optimizing Data Access with RSLinx® and FactoryTalk® Connectivity Software

- 网络 RA Knowledgebase
 - [AID 507425 – Rockwell Automation® Data Server Decision Guide](#)
 - [AID 685789 - RSLinx® Enterprise LogixDP Data Provider Information](#)

FactoryTalk[®] View SE

PUBLIC

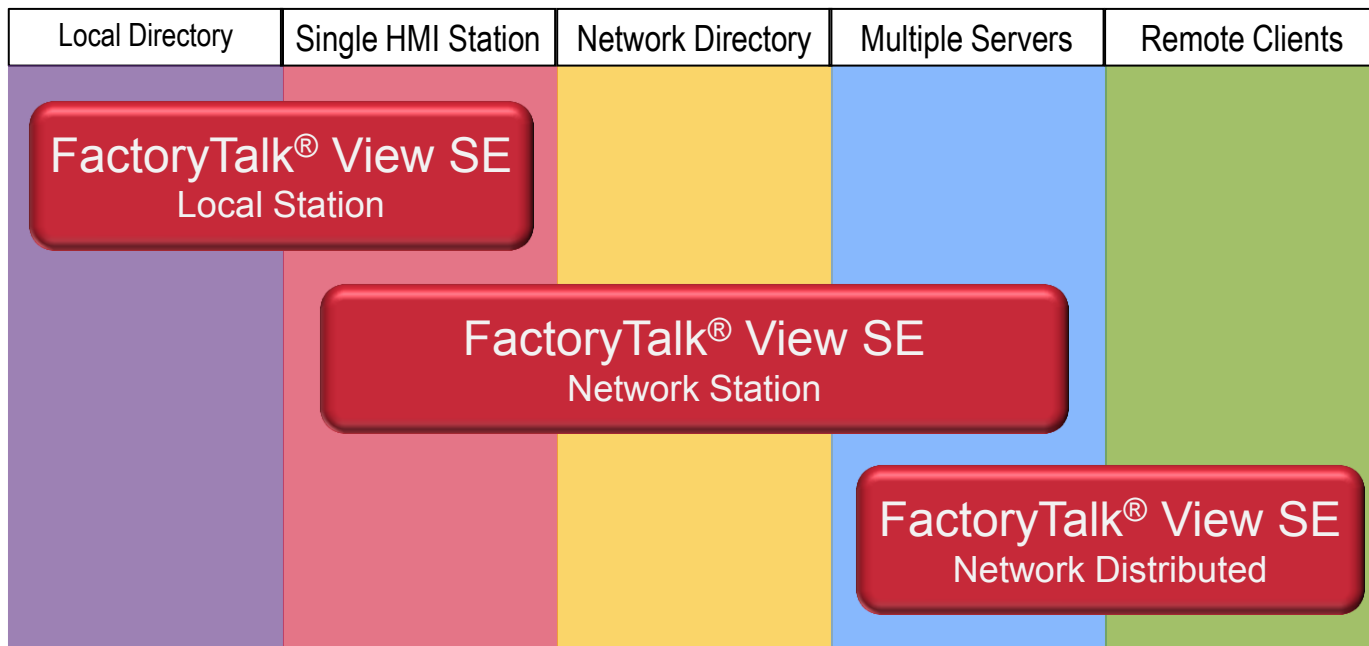


Allen-Bradley • Rockwell Software

**Rockwell
Automation**

FactoryTalk® View SE 如何选？

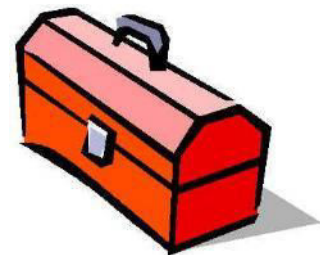
**Rockwell
Automation**



FactoryTalk® View SE 的安装组件

**Rockwell
Automation**

- FactoryTalk® View SE 包含了 :
 - Network FactoryTalk® Directory Server (FTD) (1)
 - FactoryTalk® View SE Server (HMI) (1+)
 - SQL Server (Express or Standard) (1+)
 - FactoryTalk® Live Data Server (1+)
 - FactoryTalk® Alarm Server (1+)
 - FactoryTalk® View SE Client (1+)
 - FactoryTalk® View SE Studio (1+)

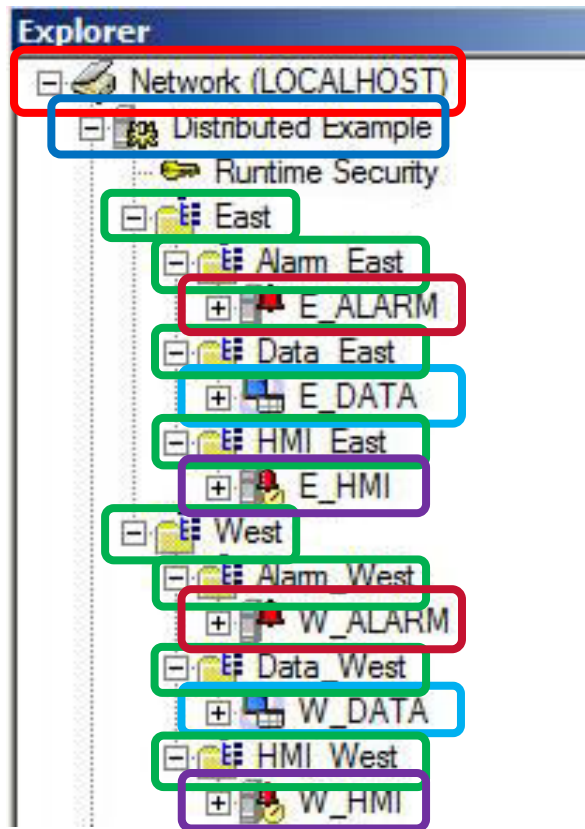


FactoryTalk® View SE 的术语

**Rockwell
Automation**

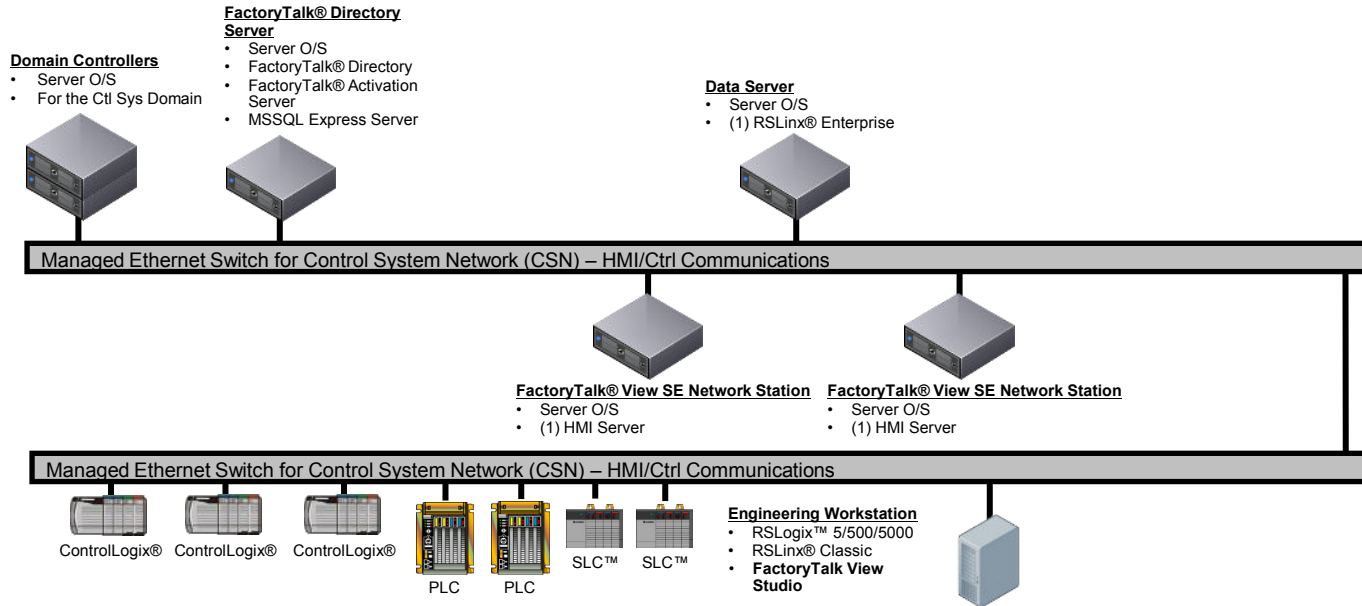
■ 术语:

- FTD
- Application
- Area
- Alarm Server
- Data Server
- HMI Server



- 仅支持单机运行 Maximum of 1 HMI Server and 1 Client, located on the same host.
 - Each HMI Server is in a separate application.
 - Remote Desktop Services not supported.
- 部分支持分布式架构 Multiple data/alarm servers supported.
 - Network Station applications can share instances, but not configurations.
 - Server sharing is dependent on host resources and data requirements.
- 支持历史数据库 Share historical data.
 - Local Station unable to communicate with FactoryTalk® Historian SE.

3、 FactoryTalk® View SE Network Station



FactoryTalk® View SE Distributed 分布式架构 (v7.00 及以上版本)

**Rockwell
Automation**

- 画面 HMI Servers: 10 per application (redundant or non-redundant)
- 数据 Data Servers: 10 per application (redundant or non-redundant)
- 报警 Alarm Servers: 10 per application (redundant or non-redundant)
- 客户端 Clients:
 - 50 per application (total mix of thick & thin clients)
- 每个FTD只容纳一个分布式架构 1 **Distributed** application per FactoryTalk® Directory (production)

FactoryTalk® View SE Distributed 分布式架构：画面服务器 HMI Server

- 可以与FTD在一起，但是建议分置 Can be co-located with the FactoryTalk® Directory, but recommend separate hosts
- 建议与客户端和工程师站分置 Recommend independent hosts – no clients or Engineering Workstation co-located, One HMI server per host
- MSSQL与Tag database MSSQL Express instance must be co-located for tag database
 - Not supported for use with anything outside of the HMI server. e.g., it cannot be used for historical logging
- Recommended 25:1 Client:Server ratio
 - 冗余不等同于均衡负载 Redundant servers do not equate to load-balancing
 - HMI标签可以用来估计负载 HMI tag utilization can be used to estimate server loading

参考 [AID 732555 – FactoryTalk® View SE Product Characterization](#)

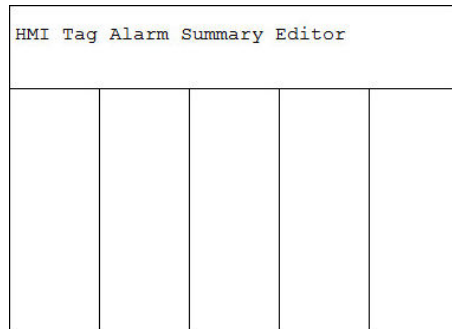
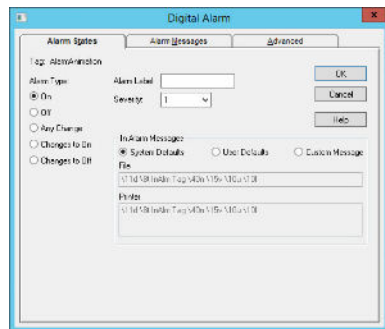
FactoryTalk® View SE

分布式架构：报警服务器 Alarm Server

Rockwell
Automation

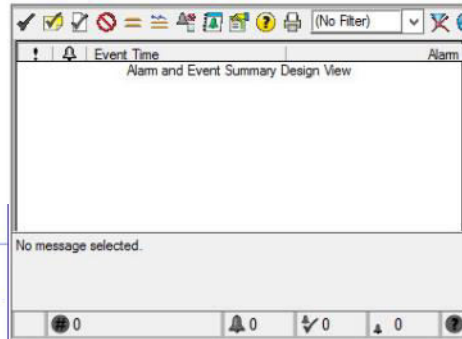
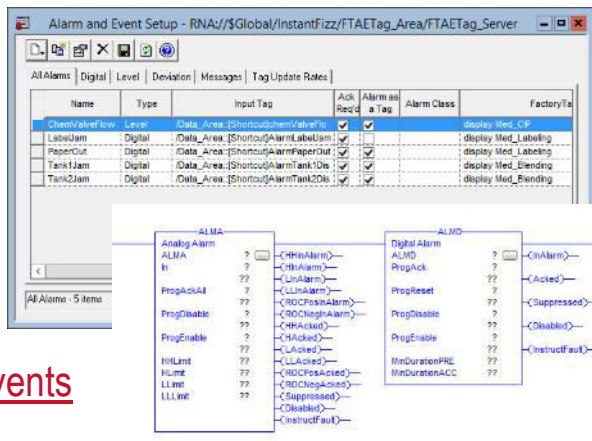
■ HMI Alarm

- 40,000 条报警 per **HMI Server**
 - 10,000 条模拟量报警 Analog
- 默认更新时间 = 2 seconds



■ FactoryTalk® Alarms & Events

- 100,000 条报警 per **Application**
- 10,000 条报警 per **Alarm Server**
- 每个 controller FactoryTalk® Alarms
 - 2,000 – non-redundant
 - 500 – redundant
- AID 44177 - FactoryTalk® Alarms & Events

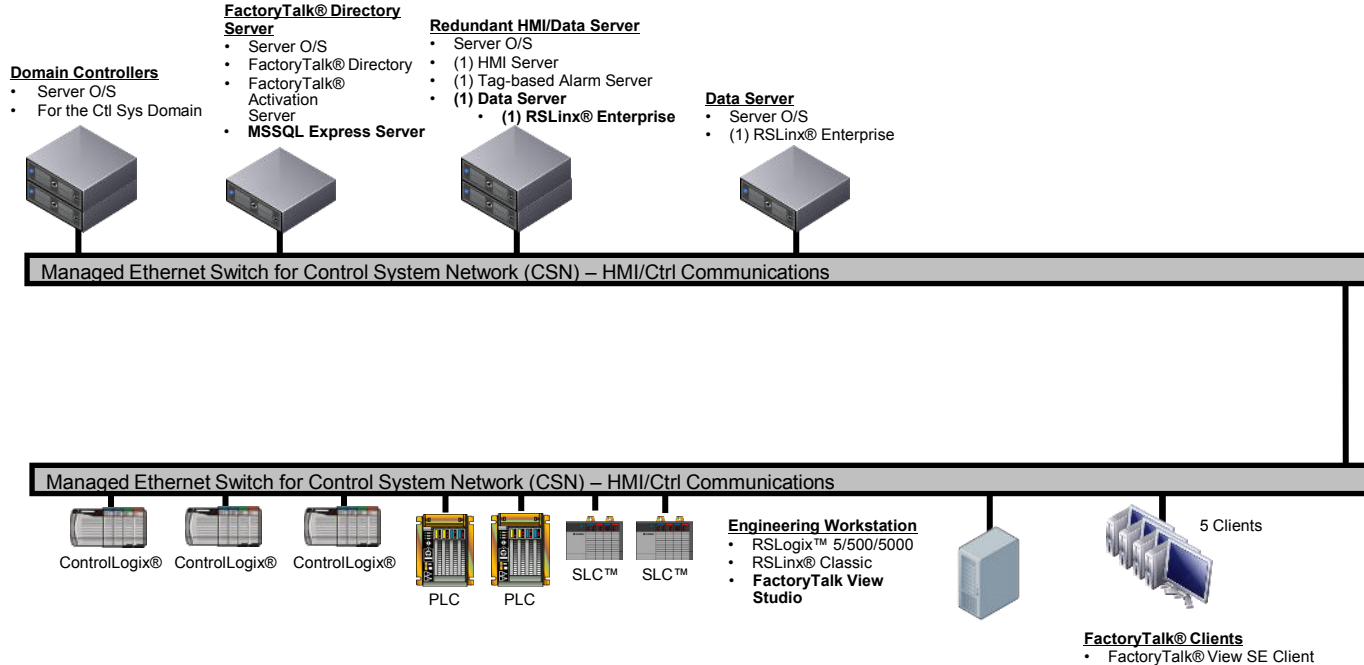


FactoryTalk® View SE Distributed 分布式架构的Data & Alarm Server

**Rockwell
Automation**

- RSLinx® Enterprise 和 RSLinx® Classic
 - Can be **co-located** with HMI server
 - No more than two different data servers per host
 - 例如 : RSLinx® Classic and RSLinx® Enterprise installed on the same host
- Device-based Alarming
 - RSLinx® Enterprise used as alarm server
 - Often **co-located** with HMI server
 - v21, v23 does **not** support device-based
- Tag-based Alarming
 - Can be **co-located** with HMI and/or Data server, or independent

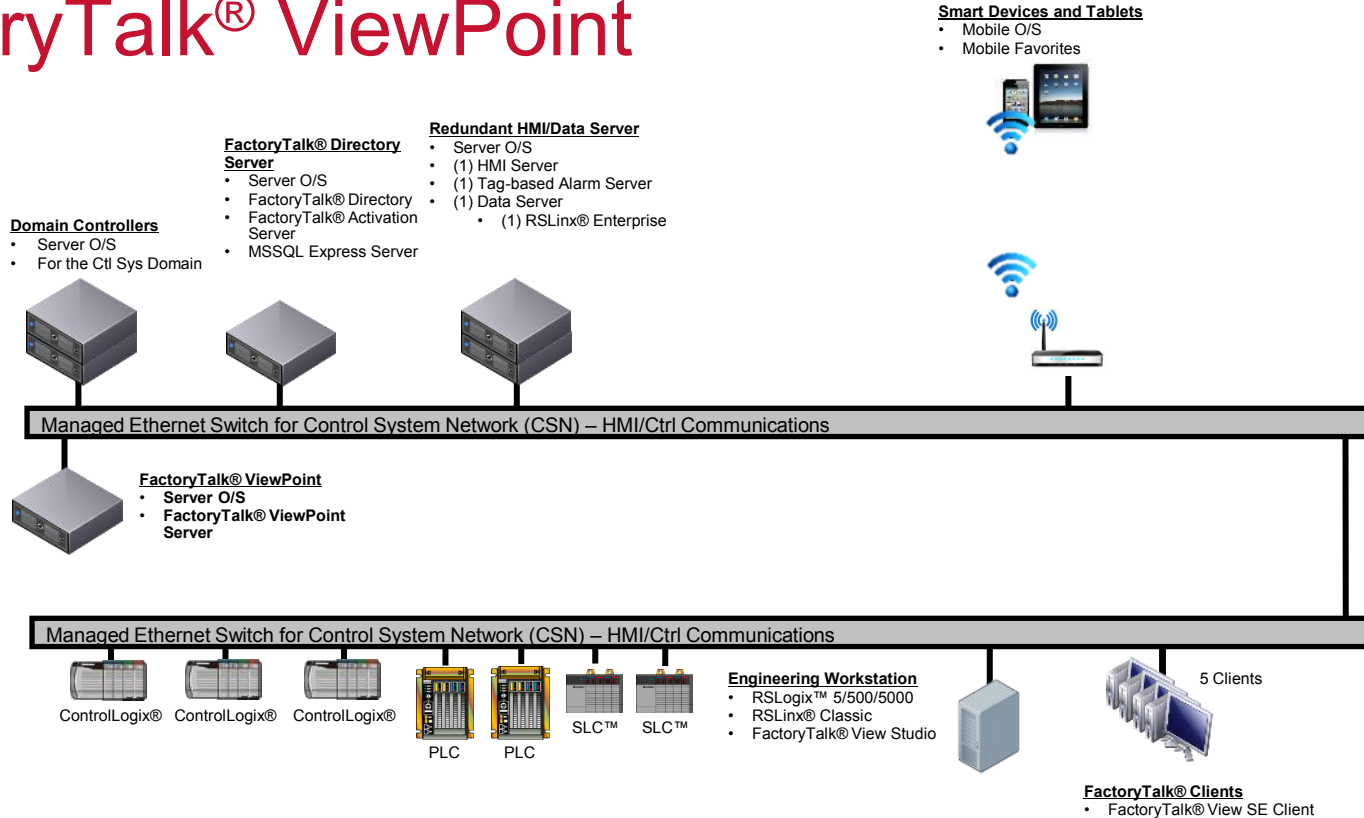
FactoryTalk® View SE



- ViewPoint can be used to extend beyond **50 clients** if mobile clients meet the application needs.
 - Up to 25 extra ViewPoint clients are within the reference architecture guidelines.
- 注意:
 - ViewPoint uses only FactoryTalk® Alarming, no Legacy/HMI Alarming
 - ActiveX controls and VBA cannot be used by ViewPoint displays

- 推荐Server系统 Use a server Operating System
- 大型应用请分置主机 A separate host is recommended for larger applications (>10 clients) and/or Redundancy
 - Can be co-located with FactoryTalk® View SE HMI server
- 每次只能发布一个工程 ViewPoint can service one application at a time

FactoryTalk® ViewPoint



- 一台主机支持多个HMI Server, 但建议分置 Don't put more than one production HMI server on the same host.
 - Support multiple HMI servers on a single host for development purposes.
- 冗余不等同于平衡负载 Redundancy is not load balancing.
 - Only one server is actively serving clients at a time.
- 50 Client limit is per application, not per server.
 - 25 clients per server is recommended.
 - Consider ViewPoint for extending applications.

关于FactoryTalk® View SE更多问题请参考...

- 课程 Rockwell Automation TechED™ 2016
 - VZ05 – Architecting a Distributed FactoryTalk® View Site Edition System
 - VZ06 – FactoryTalk® View Site Edition: Configuration and Maintenance Lab
 - VZ07 - FactoryTalk® View Site Edition: Introductory Lab
 - VZ09 – FactoryTalk® View Site Edition: Implementing FactoryTalk® Alarms and Events
- 网络 Rockwell Automation® Knowledgebase
 - [AID 32549 – FactoryTalk® View SE Distributed System Design Considerations](#)
 - [AID 37110 – FactoryTalk® View SE Tips and Best Practices TOC](#)
 - [AID 612506 – Architecting FactoryTalk® View Site Edition Network Distributed Systems](#)
- 设计文档 Rockwell Automation® Literature Library
 - [FactoryTalk® View SE Popular Configuration Drawings](#)

FactoryTalk[®] Historian SE

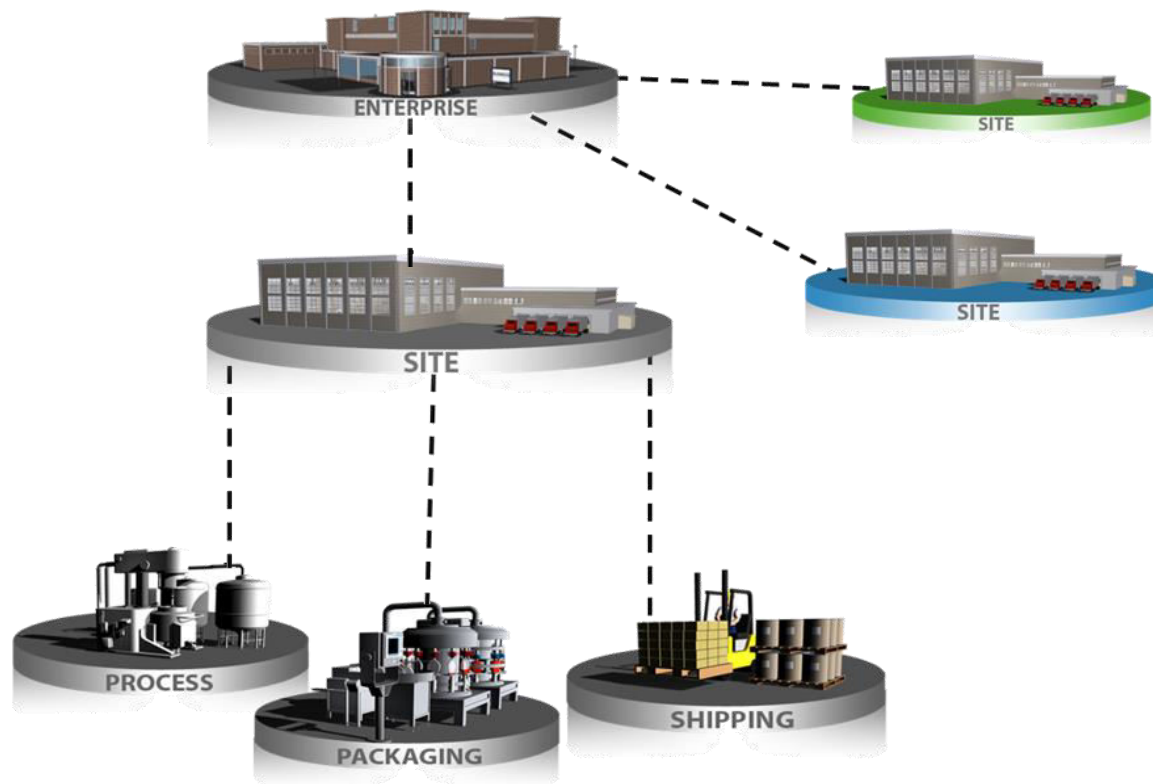
PUBLIC

 Allen-Bradley • Rockwell Software

**Rockwell
Automation**

FactoryTalk® Historian

**Rockwell
Automation**



FactoryTalk® Historian

FactoryTalk® Directory Connectivity

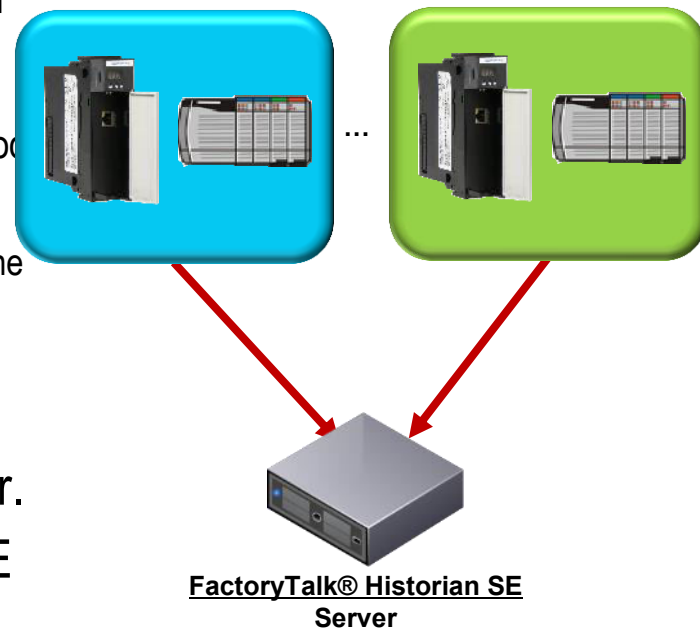
**Rockwell
Automation**

- **FactoryTalk® Historian ME** can function independently of a FactoryTalk® Directory, or within a Network FactoryTalk® Directory.
 - Native (local to ME module) or FactoryTalk® Security (Network FactoryTalk® Directory) options.
- **FactoryTalk® Historian SE** is only supported in the Network FactoryTalk® Directory
 - FactoryTalk® Historian SE **不支持** Local Directory.
- FactoryTalk® Historian SE does **not** use the FactoryTalk® Services Platform.
 - 一个FactoryTalk® Historian SE 服务器可以配置为“企业级”聚合, 从而只支持 Network FactoryTalk® Directory.

“FactoryTalk® Historian ME 卡件式数据库”

Rockwell
Automation

- 1756 Module can communicate across backplane or with modules outside of its own chassis.
 - 不超过四个模块 Can service up to 4 ControlLogix® modules (when not using high-speed collection.)
 - 仅限处理器模块 Can only service controller modules in the same chassis for high-speed collection.
- 2500 events/sec.
 - Onboard memory storage must be accounted for.
 - 长期存储数据仍需FactoryTalk® Historian SE server.



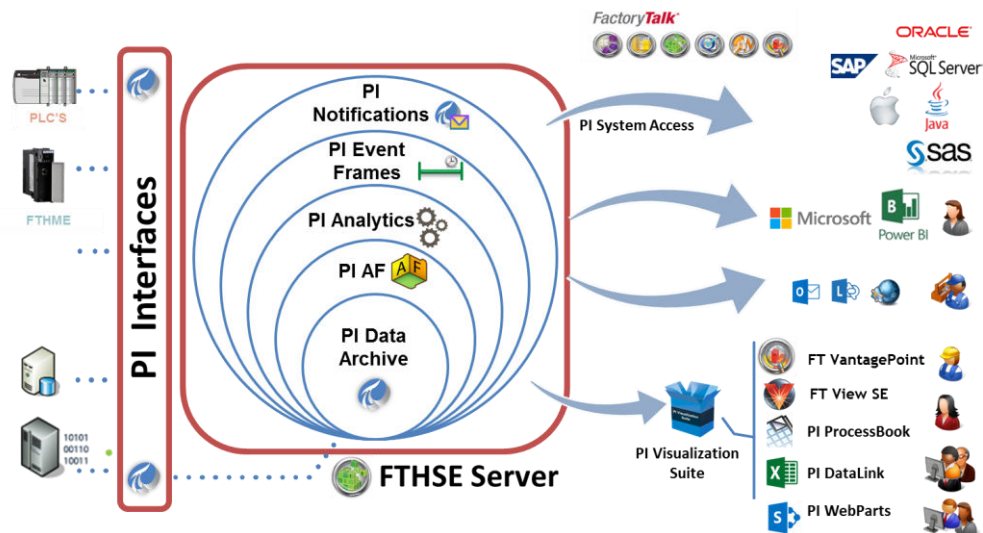
See [AID 63082 – FAQ: FactoryTalk® Historian Machine Edition](#)

FactoryTalk® Historian SE 组件

Rockwell
Automation

■ 典型FactoryTalk® Historian SE 系统通常包含以下组件：

- Network FactoryTalk® Directory Server (FTD) (1*)
- FactoryTalk® Historian Server (1-2)
- FactoryTalk® Asset Framework Server (1)
- Microsoft SQL Server (Express or Standard) (1)
- FactoryTalk® Historian Live Data Interface (1+)
- FactoryTalk® Live Data Server (1+)
- FactoryTalk® Historian Client (1+)

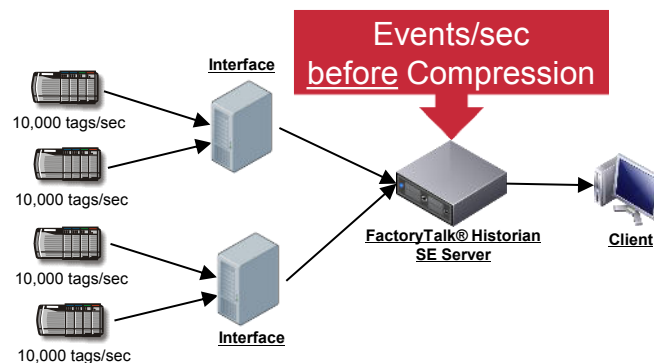
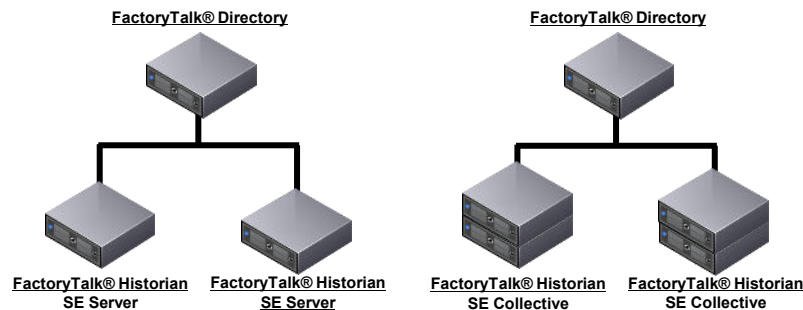


FactoryTalk® Historian SE

服务器、客户端

Rockwell
Automation

- 仅限两个 Historian SE Servers per FactoryTalk® Directory
 - Or two (2) collectives consisting of 2 members each
- 100,000 Events/sec
 - 50,000 在v4.00版之前只有一半
- 建议不超过20 Clients
- FactoryTalk® View,
FactoryTalk® VantagePoint®,
Datalink, ProcessBook, ActiveView



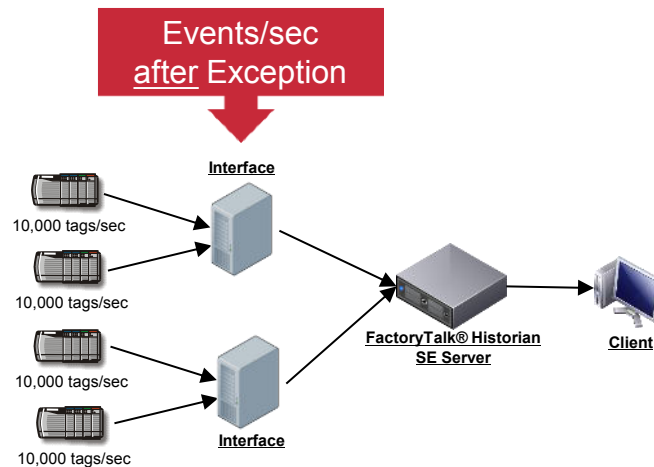
See [AID 49189 – FactoryTalk® Historian SE System Design Considerations](#)

FactoryTalk® Historian SE

接口节点 interface

Rockwell
Automation

- 25,000 events/sec **on one Interface**
 - Up to 50,000 defined tags
 - V4.0版之前只有20,000
- 20,000 events/sec **on one redundant interface pair**
 - V4.0版之前只有15,000
- 每个FactoryTalk® Historian Server之多50个接口节点
 - 50 interfaces / ME modules per server, 25 redundant



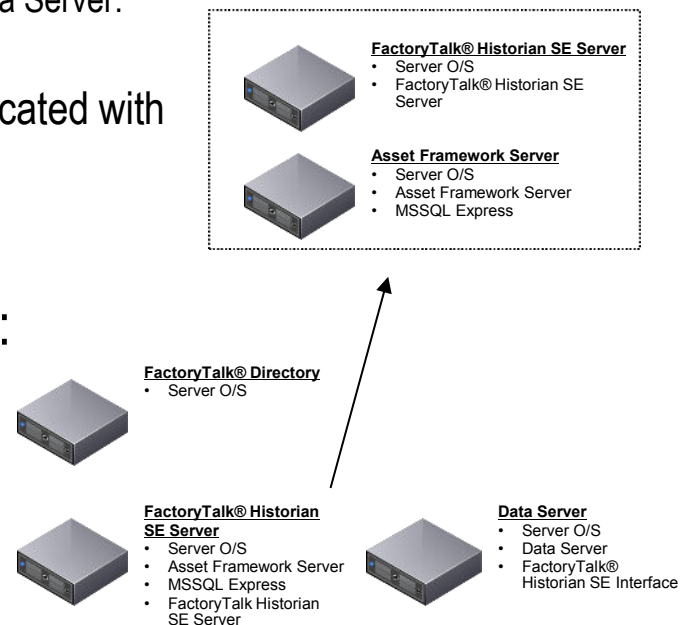
See [AID 66997 – FAQ: FactoryTalk® Historian SE FactoryTalk® Live Data Interface](#)

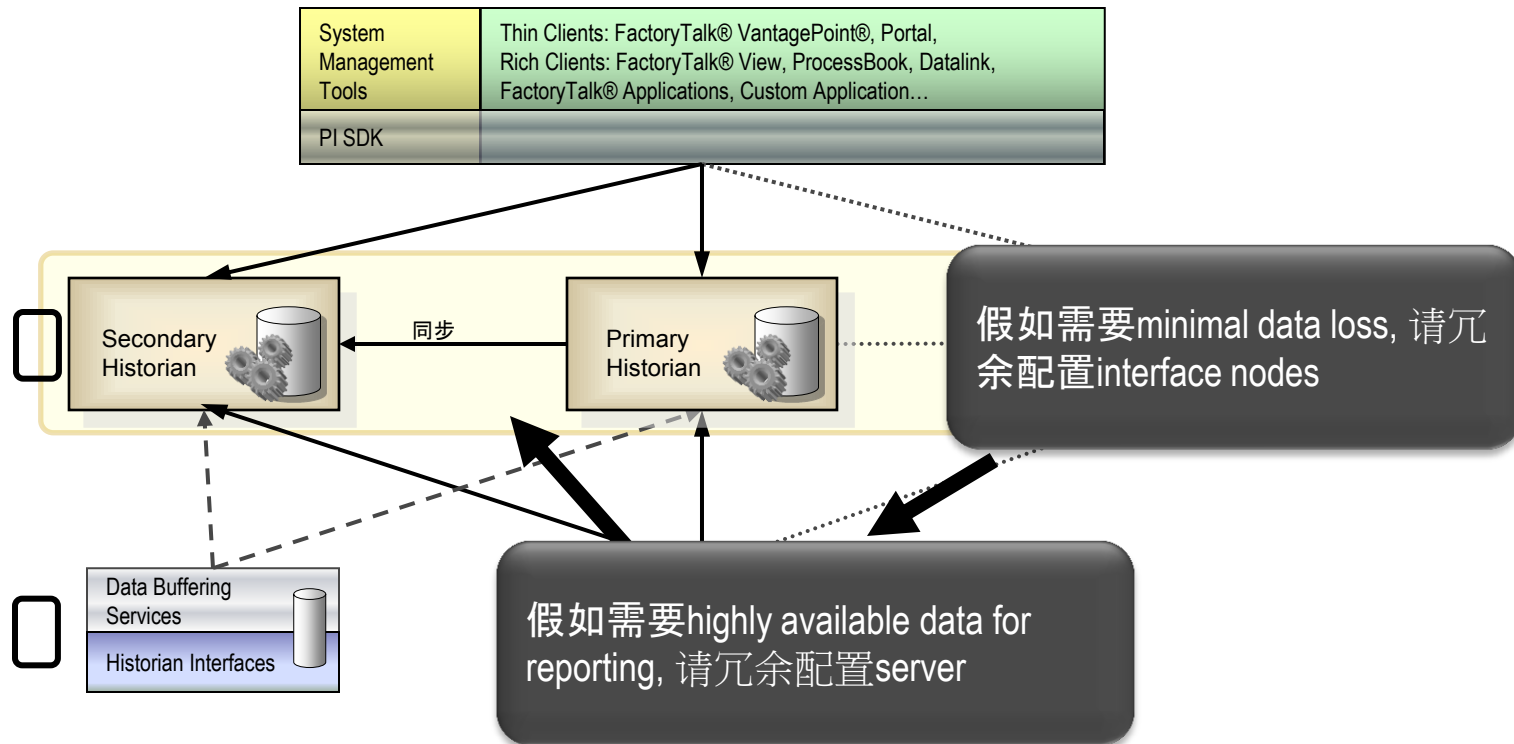
FactoryTalk® Historian SE

基本结构

Rockwell
Automation

- **接口节点缓存数据** Interfaces buffer data when the FactoryTalk® Historian Server is absent.
 - 推荐分置 Not recommended to co-locate interfaces with Historian Server host.
 - 推荐近数据服务器 As a rule, Interface should be co-hosted with Data Server.
- **FTHAF服务器主机** Asset Framework server can be co-located with Historian SE Server in non-collective configurations.
 - MSSQL Express instance can also be **co-located** in this configuration.
- **至少三台主机** Equates to at least 3 server hosts:
 - FactoryTalk® Directory Server (FTD)
 - FactoryTalk® Historian SE server
 - w/ FactoryTalk® Historian SE Asset Framework Server (FTAF)
 - w/ MSSQL Express
 - Data Server/Interface





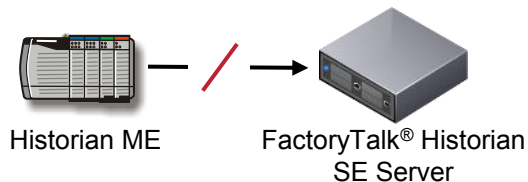
FactoryTalk® Historian ME Module vs SE Interface

Rockwell
Automation

■ 硬接口特点 FactoryTalk® Historian ME :

- **通讯减损优势** Mitigate against loss of communications from data server to controller.
- **节省本地数据server** Data collection for remote devices without local data server requirement.
- **需要接口连接** Cannot directly connect to Historian SE collective (requires additional interface.)

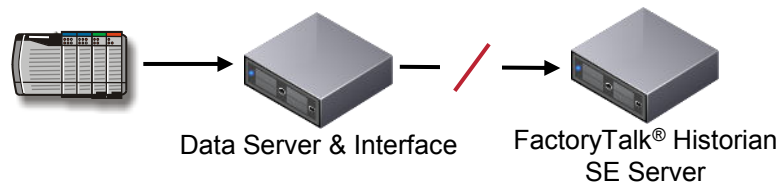
Buffering



■ Live Data 接口特点 FactoryTalk® Historian SE :

- **支持冗余** Native redundancy.
- **直接采集** Direct collective connectivity.
- **通讯优势** Greater events/sec limit.

Buffering

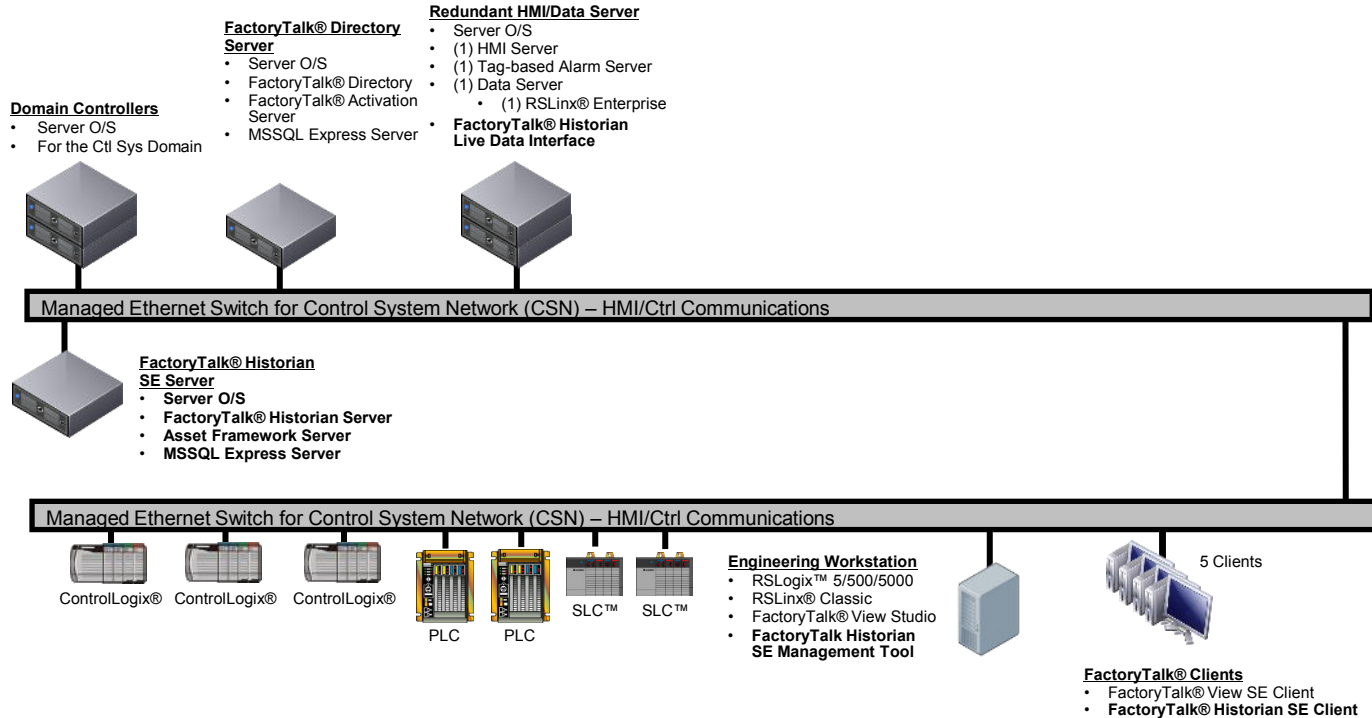


■ Historian Interface ≠ Data Server.

- 接口只是接口 An Historian Interface is a data client, receiving information from the data server, then forwarding it on to the Historian Server.

- 接口节点与server共享主机时缓存关闭 Historian Interface buffering is effectively disabled when co-located with Historian Server.
- PI历史数据库的数据存储 Historical data is not natively stored in an open database (e.g., MSSQL.)

FactoryTalk® Historian SE



FactoryTalk® Historian

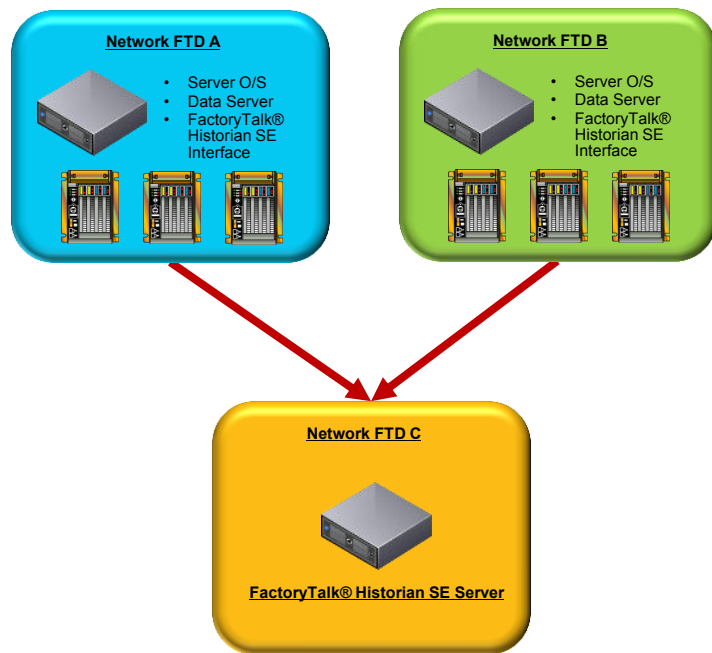
“另类”架构

Rockwell
Automation

■ 接口节点置于另一个FTD架构特点

Allows Live Data interfaces to be part of different FactoryTalk® Directories.

- 只能存不能用 Data collection purposes only; remote sites cannot access historical data as clients.
- 常常使用于ME模块不支持的硬件
Intended for architectures where ME module cannot be used.
- 如果是1756系列还是最推荐ME模块
ME module is preferred for architectures using 1756.



参见 [AID 277208 – The FactoryTalk® Historian SE Alternative Architecture](#)

关于FactoryTalk® Historian更多的问题请参考

- 课程 Rockwell Automation TechED™ 2016
 - IN09 – FactoryTalk® Historian SE: Architectures and Design Considerations
 - IN07 – FactoryTalk® Historian Site Edition: Basic Lab on Data Collection and Reporting
 - IN06 - FactoryTalk® Historian Machine Edition: Basic Configuration in ControlLogix® Rack
- 网络 Rockwell Automation® Knowledgebase
 - [AID 49189 – FactoryTalk® Historian SE System Design Considerations](#)
 - [AID 56070 – FactoryTalk® Historian SE Tips and Best Practices TOC](#)
 - [AID 60114 – FAQ: FactoryTalk® Historian SE](#)
 - [AID 66997 – FAQ: FactoryTalk® Historian SE Live Data Interface](#)
 - [AID 60277 – FAQ: FactoryTalk® Historian Collectives](#)

FactoryTalk[®] AssetCentre

PUBLIC

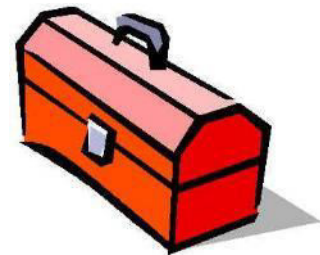


Allen-Bradley • Rockwell Software

**Rockwell
Automation**

■ 一个典型的 FactoryTalk® AssetCentre系统通常包含以下组件：

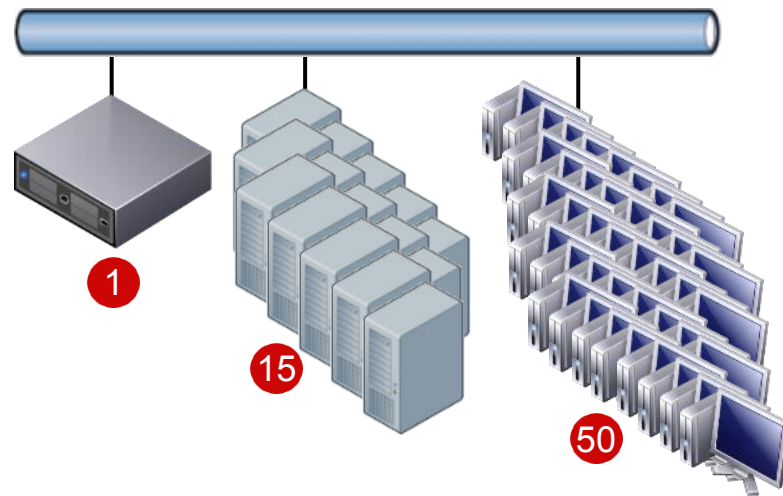
- Network FactoryTalk® Directory Server (FTD) (1)
- Microsoft SQL Server (1)
- FactoryTalk® AssetCentre Server (1)
- FactoryTalk® AssetCentre Agent (1+)
- FactoryTalk® AssetCentre Client (1+)
- ProCalV5 Server (0-1)
- ProCalV5 Client (0-1+)



FactoryTalk® AssetCentre 系统限制

Rockwell
Automation

- **1个服务器** FactoryTalk® AssetCentre Server
 - ProCalV5 Server (if using Calibration Management)
- **15个agent** FactoryTalk® AssetCentre Agents
 - 十个组 Up to 10 Agent Groups
 - Single agent services ~100 assets/ 12hrs
- **50个并发客户端** concurrent FactoryTalk® AssetCentre Clients
 - ProCalV5 Client (if using Calibration Management)



- 系统仅限一个FTD FactoryTalk® Directory – there can be only one!
 - A FactoryTalk® AssetCentre Server can be linked with **one and only one** FactoryTalk® Network Directory.
- FTAC后台数据库 Microsoft SQL Server
 - Each FactoryTalk® AssetCentre system can use a single Microsoft SQL (MSSQL.)
 - MSSQL Server can be co-located with Server component.
- FTAC多agent FactoryTalk® AssetCentre Agents
 - 每台机器仅有一个agent, agent可以与服务器共存同一主机 One agent per host, Agent component can be co-located with Server component.
 - 每个agent可以单独配置 As of v6.0, Agents can be configured differently!
 - 资产授权 Each agent requires un-activated editor software for applicable assets.
 - 安装agent的主机不推荐作为工程师站使用 Agent hosts should not be used as Engineering Workstations due to resource usage.
 - 具体参见 [AID 106118 – Determining the Necessary Number of AssetCentre Agents](#)

- 建议FTAC Client跟工程师站同主机 Locally on Engineering Workstations
 - Engineer workstation = PC being used with editing software such as RSLogix™, View Studio, etc.
 - 便于管理程序的变更 Allows user to check out files for use with editing application, make changes, then check files back into archive.
- 审计功能 Any FactoryTalk® PC requiring audit functionality
 - FactoryTalk® AssetCentre Client acts as Audit “listener”
- Web client目前不支持诊断 Web Client will not collect diagnostics

FactoryTalk® AssetCentre Client



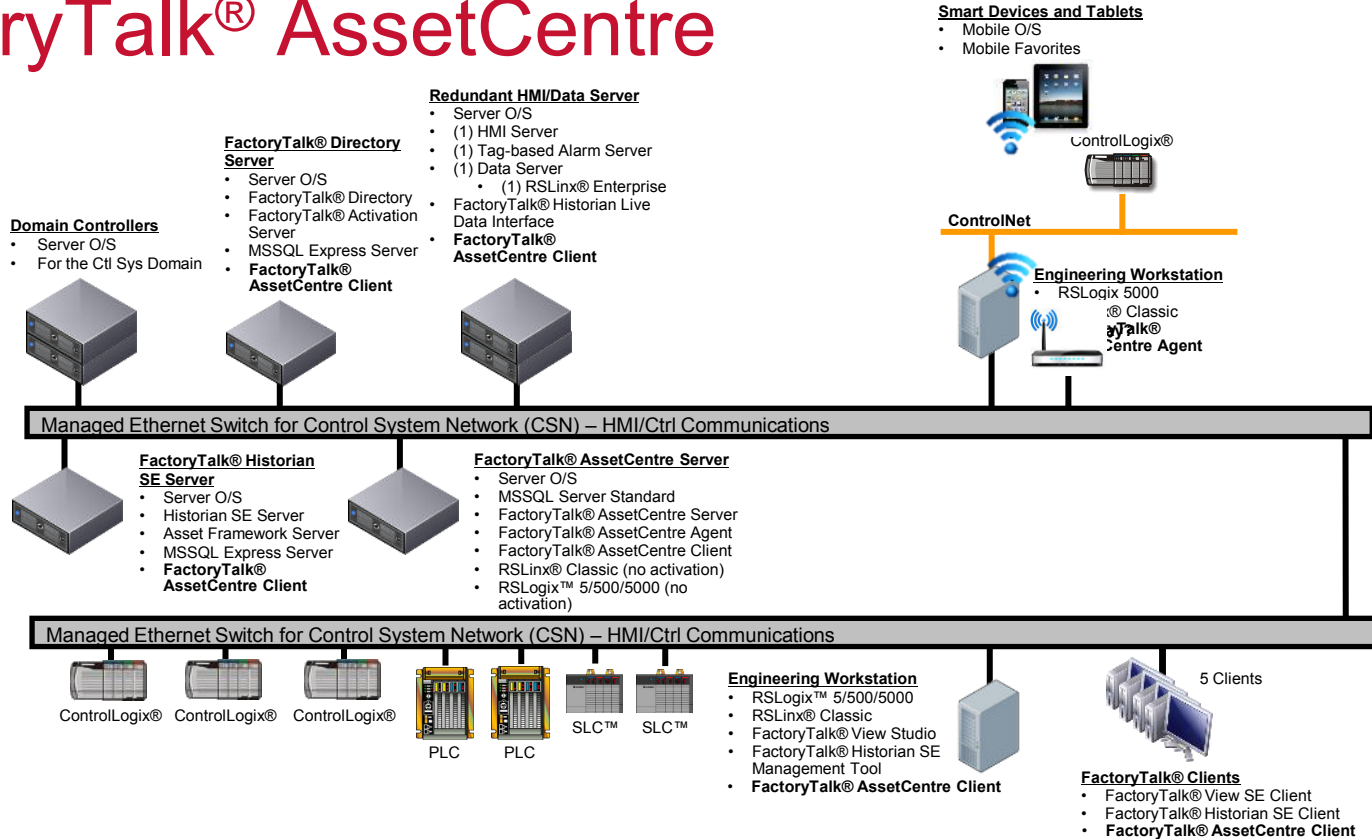
Diagnostics



FactoryTalk® AssetCentre Server

- ...spelling...
- 必备Agent组件 The FactoryTalk® AssetCentre Agent component is required for all configurations.
- 配置审计和诊断信息 Audits/Events are not collected automatically – an AssetCentre Client must be installed on the host to send the diagnostic information to the Server.
- 系统仅限一个FTD Only one AssetCentre Server is supported per FactoryTalk® Directory.

FactoryTalk® AssetCentre



关于FactoryTalk® AssetCentre 更多问题请参考

- 课程 Rockwell Automation TechED™ 2016
 - SY09 – FactoryTalk® AssetCentre: Overview
 - SY10 – FactoryTalk® AssetCentre: Introductory Hands-on Lab
 - SY11 – FactoryTalk® AssetCentre: Advanced Hands-on Lab

- 网络 Rockwell Automation® Knowledgebase
 - [AID 57483 – FactoryTalk® AssetCentre System Design Considerations](#)
 - [AID 56049 – FactoryTalk® AssetCentre Tips and Best Practices TOC](#)
 - [AID 60057 – Architecting FactoryTalk® AssetCentre](#)

- 视频 Product Portfolio
 - [Introduction to FactoryTalk® AssetCentre Architecture \(video\)](#)

FactoryTalk[®] VantagePoint

PUBLIC

 Allen-Bradley • Rockwell Software

**Rockwell
Automation**

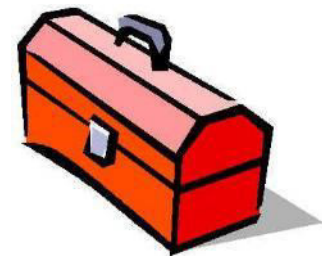
FactoryTalk® VantagePoint 与FactoryTalk® Directory

- FT VantagePoint 与FTD的关系 FactoryTalk® VantagePoint® can function independently of a FactoryTalk® Directory, or within a Network FactoryTalk® Directory.
 - **Within** a FactoryTalk® Directory server, FactoryTalk® VantagePoint can connect to:
 - FactoryTalk® Live Data
 - FactoryTalk® Historian SE or ME
 - FactoryTalk® Alarms and Events historical database
 - **FactoryTalk® Historian and FactoryTalk® Alarms & Event information** can also be collected from **outside** of the FactoryTalk® Directory server.
- FT VantagePoint 仅支持网络架构 FactoryTalk® VantagePoint® is only supported in the Network FactoryTalk® Directory.

FactoryTalk® VantagePoint 组件

**Rockwell
Automation**

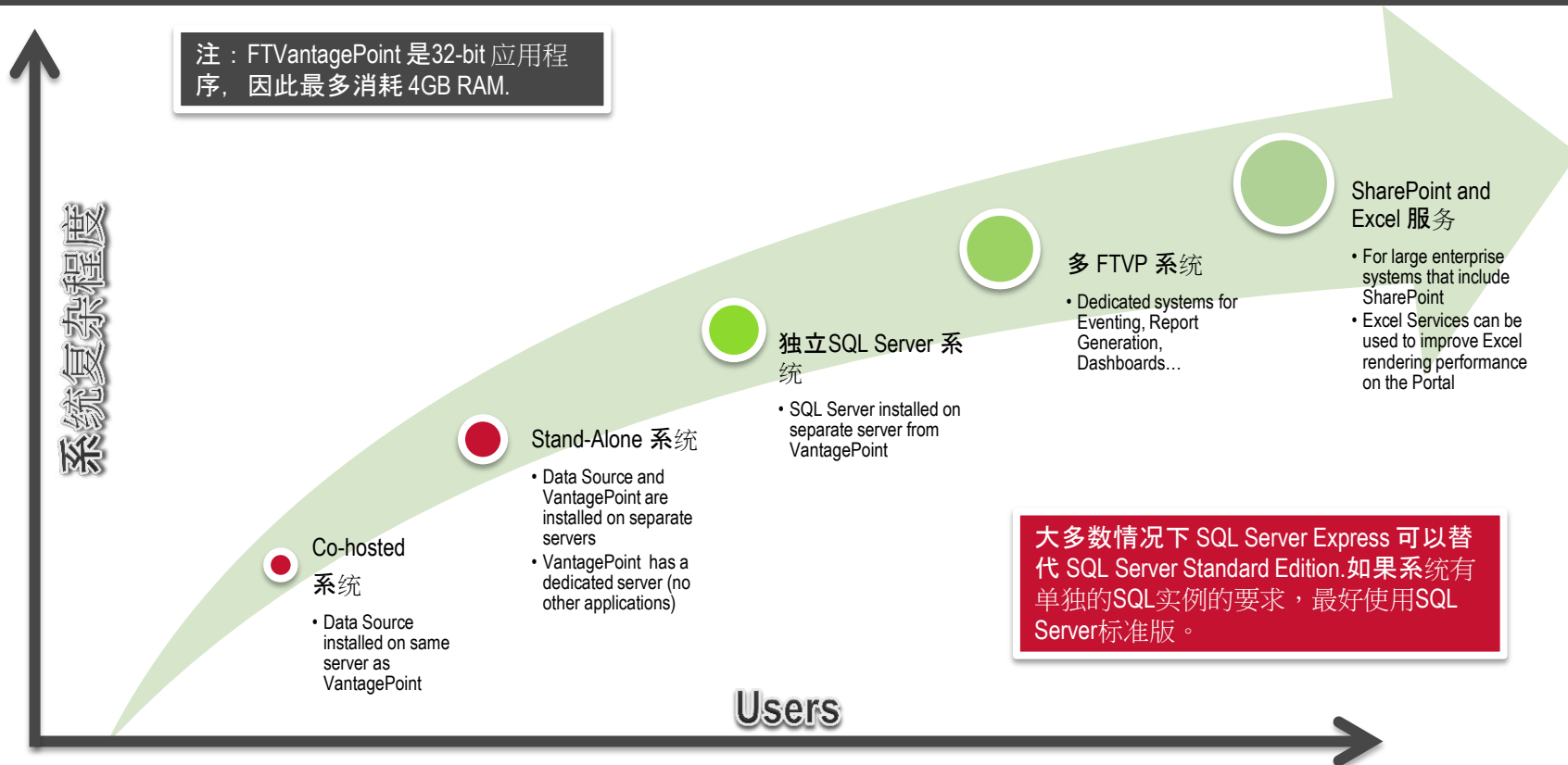
- 典型的FactoryTalk® VantagePoint 系统包含以下部分：
 - Network FactoryTalk® Directory Server (FTD) (0-1)
 - Microsoft SQL Server (1)
 - MSSQL CLR (0-1)
 - Microsoft SharePoint Server w/Web Parts (0-1)
 - FactoryTalk® VantagePoint Server (1)
 - FactoryTalk® VantagePoint Mobile Site (0-1)
 - Data Source (1+)
 - FactoryTalk® VantagePoint Client (1+)
 - FactoryTalk® VantagePoint KPI App (0+)



FactoryTalk® VantagePoint 规模

Rockwell
Automation

注：FTVantagePoint 是32-bit 应用程序，因此最多消耗 4GB RAM.



大多数情况下 SQL Server Express 可以替代 SQL Server Standard Edition. 如果系统有单独的SQL实例的要求，最好使用SQL Server标准版。

■ 最推荐典型3机系统:

- FactoryTalk® VantagePoint Server
 - (w/Mobile Site & FTD)
- Data Source
- SQL Server

推荐3机系统，因为其具有扩展性，并能够最大限度地减少潜在的资源冲突。

■ 小型系统也可以共置于一个主机:

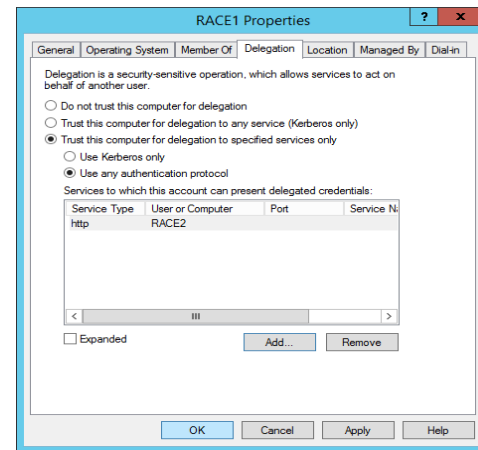
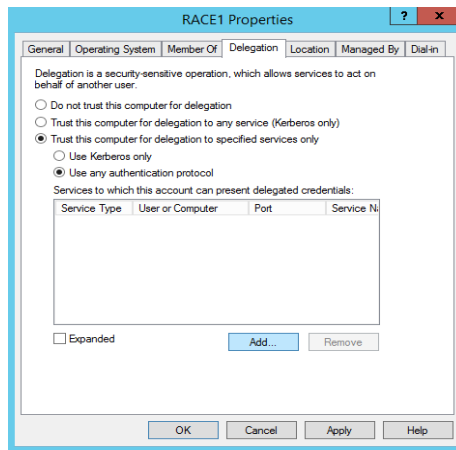
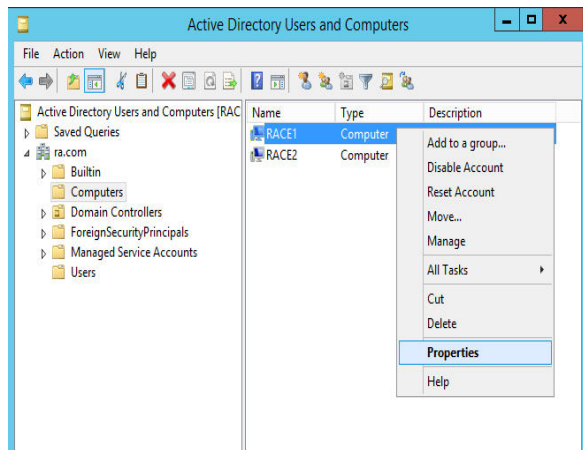
- FactoryTalk® VantagePoint Server and MSSQL combined (w/Mobile Site & FTD)
- Data Source

建议小型系统不超过
十个users

FactoryTalk® VantagePoint® Separating SQL Server

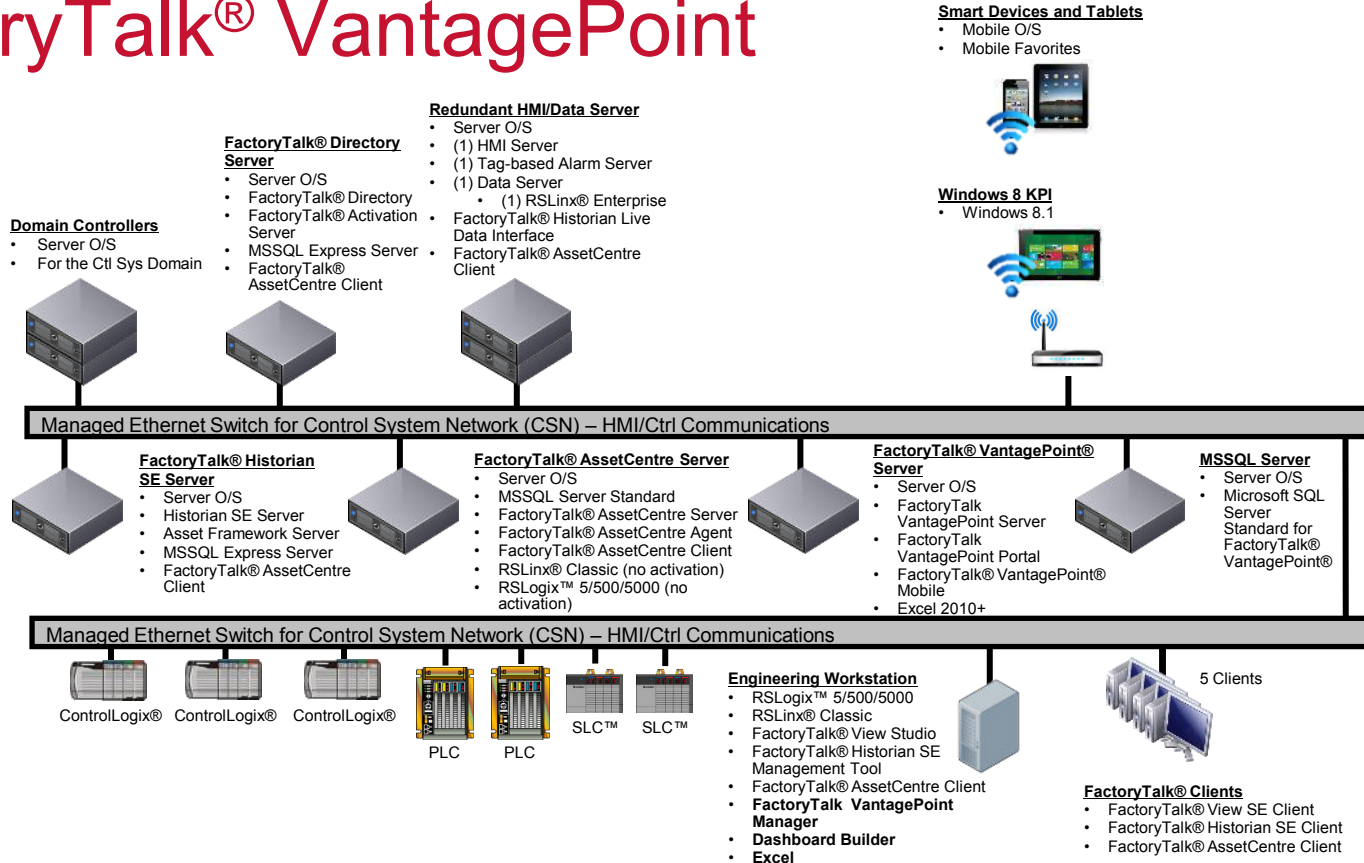
Rockwell
Automation

- 推荐VantagePoint Server与SQL Server分置于两个主机
 - 若要使用SQL CLR 必须设置 Kerberos Delegation
 - 详情请参见 [672599 - FactoryTalk® VantagePoint: Configuring Kerberos Delegation to Support a Distributed Architecture](#)



- 如何co-located安装FactoryTalk® VantagePoint Server呢?
 - 建议不要co-located共享主机
 - 以下组件可以co-located主机
 - 如果没有独立实例的需求MSSQL可以co-located
 - 在特定情况下FactoryTalk® Historian SE
请参见 [AID 62869 – FactoryTalk® Historian SE and FactoryTalk® VantagePoint on a Single Host Computer](#)

FactoryTalk® VantagePoint



关于FactoryTalk® VantagePoint更多问题请参考

- 课程 Rockwell Automation TechED™ 2016
 - IN04 – FactoryTalk® VantagePoint EMI Lab: Building an Information System
 - IN05 - FactoryTalk® VantagePoint EMI Advanced Topics and Reporting

- 网络 Rockwell Automation® Knowledgebase
 - [AID 59149 – FactoryTalk® VantagePoint Tips and Best Practices TOC](#)
 - [AID 61808 - FAQ: FactoryTalk® VantagePoint Frequently Asked Questions](#)
 - [AID 493349 – FAQ: FactoryTalk® Information Software Products – Integration with Microsoft SharePoint](#)
 - [AID 520456 – FAQ: Using SQL CLR with FactoryTalk® VantagePoint EMI](#)
 - [AID 576677 – FAQ: FactoryTalk® VantagePoint EMI Windows 8 KPI Frequently Asked Questions](#)
 - [AID 613768 – FAQ: FactoryTalk® VantagePoint Mobile Site](#)

Microsoft SQL Server

PUBLIC



Allen-Bradley • Rockwell Software

**Rockwell
Automation**

Microsoft SQL Express vs Standard

- Many Rockwell Software products requiring SQL databases now ship with Microsoft SQL Express.
 - Intended for smaller systems and/or historical storage
- SQL Express有10G限制.
 - 同时也会限制内存 Also limited to lesser of 1 socket or 4 cores, and 1GB memory per instance
- 支持将SQL Express升级为SQL Standard.

■ FactoryTalk® View SE HMI Tag Database Server

- Express instances – must be co-located with HMI Server



Redundant HMI/Data Server

- (1) HMI Server
- (1) Tag-based Alarm Server
- (1) Data Servers
 - (1) RSLinx® Enterprise
- FactoryTalk® Historian Live Data Interface

■ FactoryTalk® Alarms & Events



FactoryTalk® Directory Server

- FactoryTalk® Directory Server
- FactoryTalk® Activation Server
- MSSQL Express Server

■ FactoryTalk® Historian SE Asset Framework Server



FactoryTalk® Historian SE Server

- Server O/S
- FactoryTalk® Historian SE Server
- Asset Framework Server
- MSSQL Express Server

■ FactoryTalk® AssetCentre Server



FactoryTalk® AssetCentre Server

- MSSQL Server Standard
- FactoryTalk® AssetCentre Server
- FactoryTalk® AssetCentre Agent
- FactoryTalk® AssetCentre Client

■ FactoryTalk® VantagePoint® Server



FactoryTalk® VantagePoint® Server

- FactoryTalk® VantagePoint® Server
- FactoryTalk® VantagePoint® Portal
- Excel



MSSQL Server

- MSSQL Server Standard for FactoryTalk® VantagePoint®

- Many instances can be consolidated:
 - FactoryTalk® Alarms & Events (FTAE) History
 - FactoryTalk® Historian SE Application Framework (FTAF) Server
 - FactoryTalk® AssetCentre (FTAC) Server
 - FactoryTalk® VantagePoint® (FTVP) Server
- MSSQL Standard 和 Express 同机安装 can be installed “side-by-side” on the same host
- 考虑到 SQL 对主机资源的占用和整合
 - 推荐独立安置 Separate server recommended
 - SQL Express instance 没有足够的资源处理多个应用程序

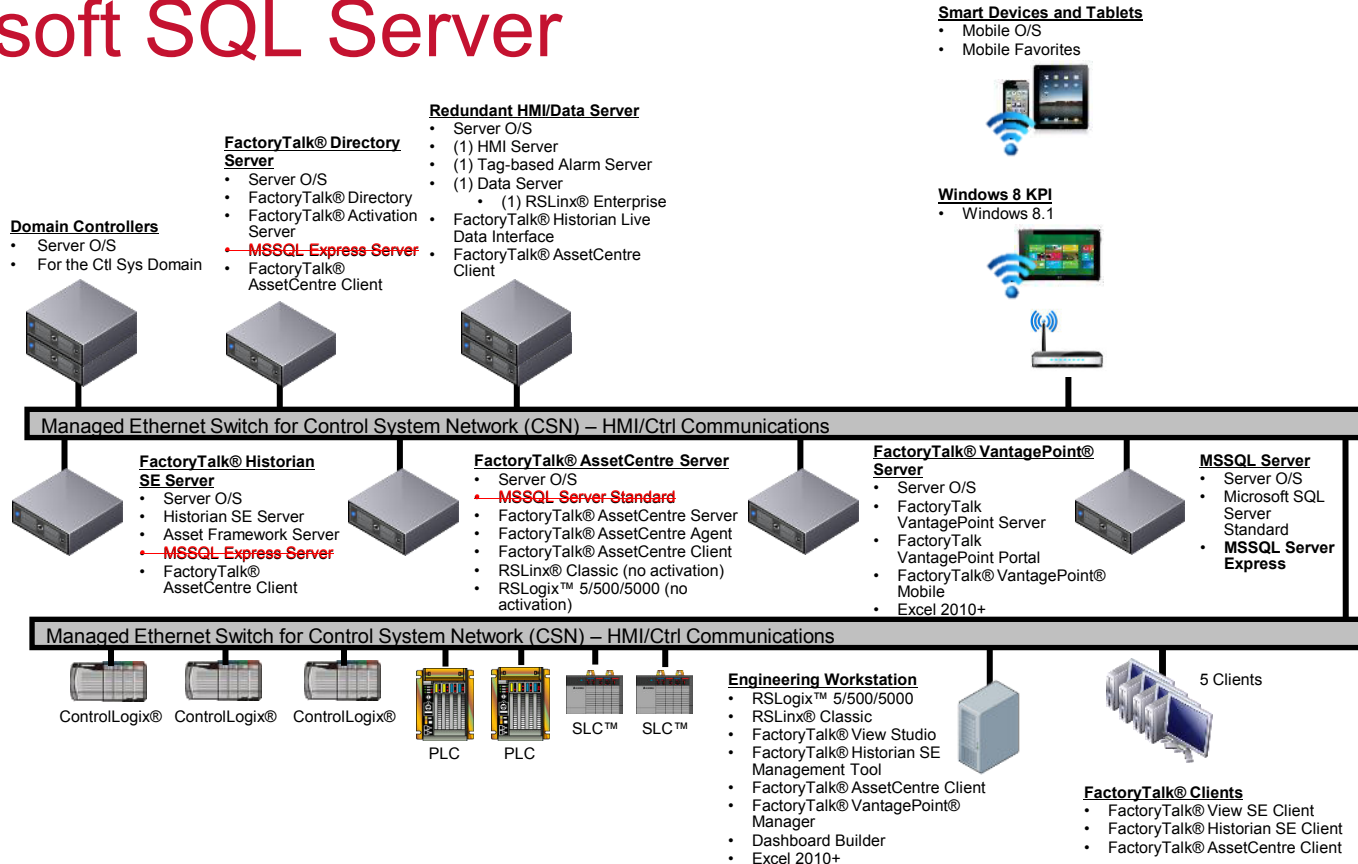


Microsoft SQL Server

- FTAE Database
- FTAF Database
- FTAC Database
- FTVP Database

- **建议数据库和时间做备份**
 - FactoryTalk® AssetCentre: [AID 59541](#)
 - FactoryTalk® VantagePoint: [AID 62884](#)
- **存储运行之后监视存储数据的大小 Monitor the size of the transaction logs, particularly in systems with constant data changes (e.g., FactoryTalk® AssetCentre.)**
- **Discuss further policies with end user's database management team.**
 - **建议数据库设置索引和清除 Indexing and cleanup operations.**
 - **数据库扩展策略 Database growth policy expansion.**

Microsoft SQL Server



关于Microsoft SQL 和 FactoryTalk®请参考

■ Rockwell Automation® Knowledgebase

- [AID 64647 – FAQ: Using Microsoft SQL Server with Rockwell Software® FactoryTalk® Products](#)
 - Includes support information, memory best practice links, licensing FAQs
- [AID 49075 – FactoryTalk® Metrics MSSQL Backup](#)
- [AID 59541 – FactoryTalk® AssetCentre MSSQL Backup & Restore](#)
- [AID 62884 – FactoryTalk® VantagePoint® MSSQL Backup](#)

更多的问题...

Virtualization相关

- Rockwell Automation TechED™ 2016
 - TS06 - Introduction to Virtualization for Manufacturing Environments
 - TS07 - Building a Hardware Infrastructure for a Virtualized Solution
- Rockwell Automation® Knowledgebase
 - [AID 568026 – Using Rockwell Software® with VMware](#)
- Literature Library
 - [Virtualization for Process Automation Systems](#)

Thin Clients相关

- Rockwell Automation TechED™ 2016
 - VZ15 - Extending FactoryTalk® View Site Edition with Thin Client Technologies
 - VZ16 – ACP ThinManager: ThinManager Relevance: The Future of Industrial Mobility is Now
 - NS14 - Deploy Secure Network Architectures for The Connected Enterprise
- Rockwell Automation® Knowledgebase
 - [AID 567658 – FactoryTalk® View SE with Windows 2008 RDS](#)

谢谢!

PUBLIC

 Connect with us.

www.rockwellautomation.com

 Allen-Bradley • Rockwell Software

**Rockwell
Automation**